



Red Hot Sales and Lettings are delighted to bring to the market this two bedroom semi detached house situated in a popular area of Prudhoe. The property boasts off street parking for multiple vehicles and generous gardens. Internally there are two double bedrooms to the first floor, with a lounge, kitchen, separate utility and bathroom to the ground floor.

The property is ideally situated for local amenities, schools and transport links

**High Close**

Prudhoe, Northumberland, NE42

Asking Price:

**£140,000**

EPC Rating: To be



**Entrance Hall:**

Central heating radiator, stairs to first floor.

**Living Room:**

**16'1" by 10'4" (4.9m by 3.15m)**

Feature fireplace with gas fire, central heating radiator, double glazed window and double glazed French doors.

**Kitchen:**

**11' by 6'1" (3.35m by 1.85m)**

Fitted with a range of wall and base units with work surfaces over, sink and drainer unit, integrated oven and hob, space for fridge freezer, plumbed for washing machine, double glazed window.

There is also two generous storage cupboards.

**Utility Room:**

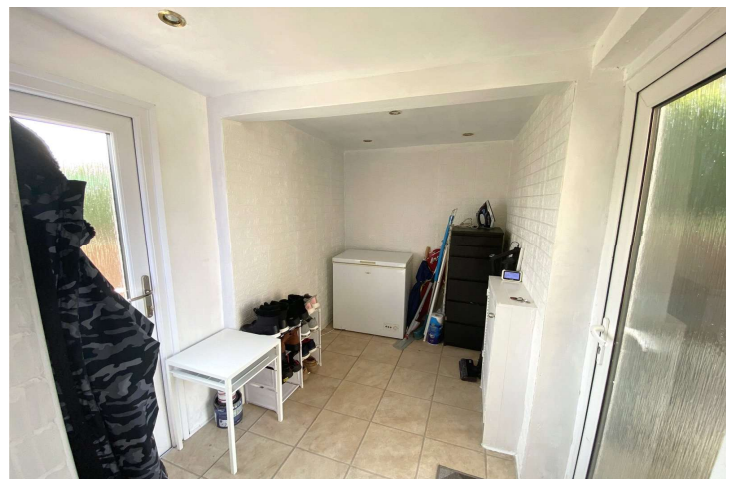
**10'1" by 5'5" (3.07m by 1.65m)**

Plumbed for washing machine, doors to rear and front externals.

**Bathroom:**

**7'6" by 6'1" (2.29m by 1.85m)**

Bath with shower over, wash hand basin, WC, central heating radiator, double glazed window.



For additional information and full photo gallery please visit [www.redhotproperty.co.uk](http://www.redhotproperty.co.uk)



**Landing:**

Double glazed window.

**Bedroom One:**

**16'9" by 9'2" (5.1m by 2.8m)**

Storage cupboard with hot water tank, central heating radiator, two double glazed windows.

**Bedroom Two:**

**16'9" by 10'6" (5.1m by 3.2m)**

Storage cupboard housing boiler, central heating radiator, two double glazed windows.



**Front External:**

Driveway parking for multiple cars, lawned gardens, access to rear gardens.

**Rear External:**

Mainly laid to lawn with patio areas.

**Disclaimer**

**Tenure** - To be advised

**Viewing** - By appointment through Red Hot Property



For additional information and full photo gallery please visit

[www.redhotproperty.co.uk](http://www.redhotproperty.co.uk)

Every care has been taken with the preparation of these particulars, but they are for general guidance only and complete accuracy cannot be guaranteed. If there is any point, which is of particular importance please ask or professional verification should be sought. All dimensions are approximate. The mention of fixtures, fittings &/or appliances does not imply they are in full efficient working order. Photographs are provided for general information and it cannot be inferred that any item shown is included in the sale. These particulars do not constitute a contract or part of a contract